

# Sorrel and Campion House Pipework improvement project



**\*\*\*Important: your home is being upgraded as part of Phase 3 works\*\*\***

## What is happening?

### Temporary accommodation

We are carrying out works to upgrade the hot and cold water pipes at your scheme. We are sorry for the inconvenience this will cause you. As there will be no running water in your home during this time, we will need to house you in temporary accommodation on the scheme for a few days.

Your temporary accommodation will contain:

- cooker
- fridge
- 2-seater sofa
- double bed
- mattress
- internet
- TV
- bin

**For health and safety reasons, while the works are being carried out, you will not be able to access your home. Please see more details below.**

## What you need to do

### 1. Prepare your home for the work

Our contractors will need safe access to install new heating pipes and radiators in your home. Please move all furniture\* and belongings **approximately 1 metre away** from the walls shown with a red line on the layout plan of your flat (over the page).

To avoid delay and inconvenience, please could you also:

- empty your bedroom wardrobe of clothes
- clear belongings from the shelving area in the lounge at low level (unless we have told you otherwise when we visited you)
- empty your kitchen units and clear your worktop, in the area where the blue and green pipes are shown on the enclosed plan
- empty your kitchen bin
- remove coats etc from the hallway

### 2. Get together essential belongings

Please ensure you take everything with you that you will need during your short stay in temporary accommodation, including (for example):

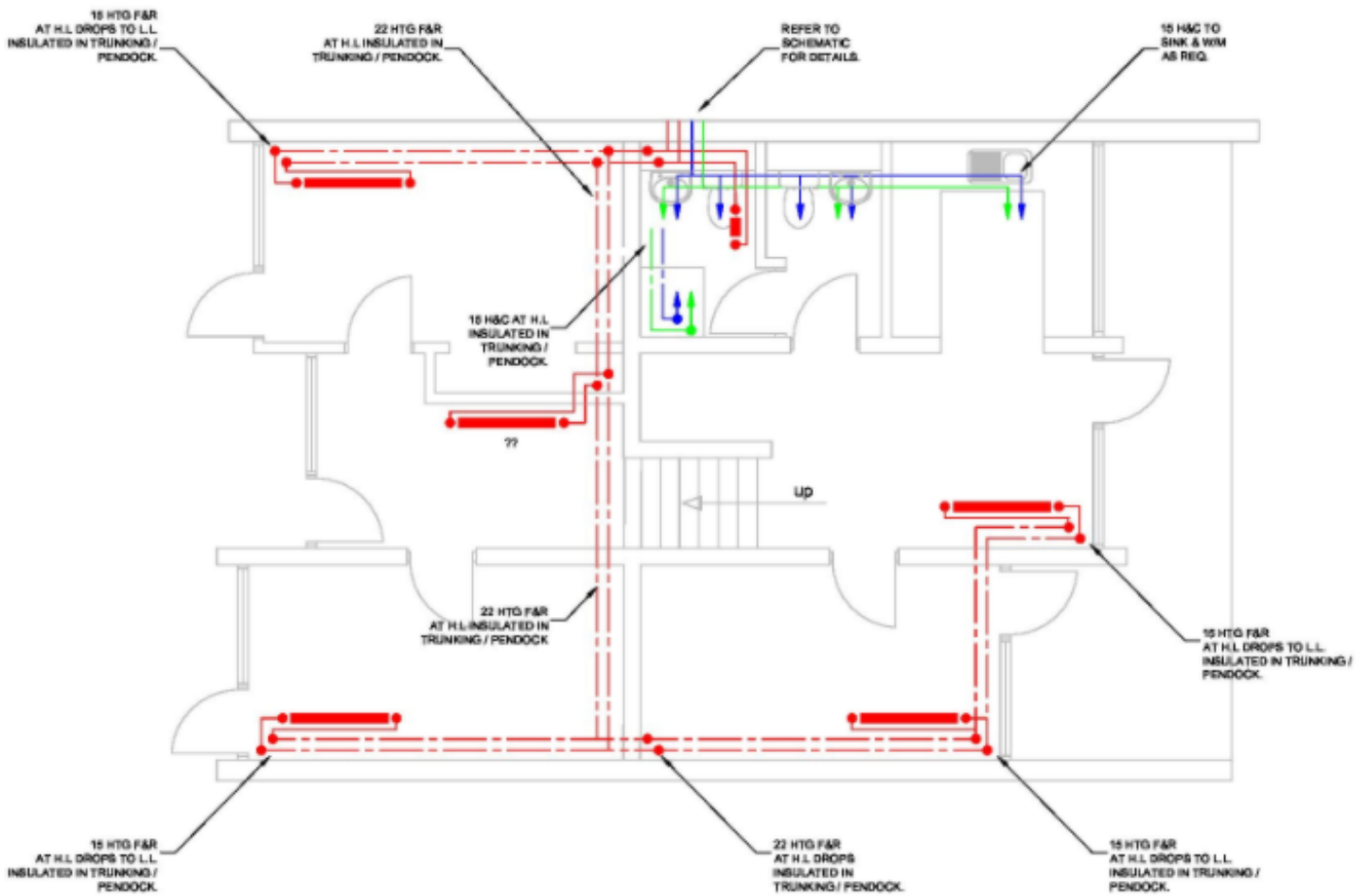
- clothing and shoes
- toiletries
- food
- microwave
- toaster
- kettle
- cutlery, plates, glasses and mugs
- pots, pans and other cooking utensils
- vacuum cleaner and cleaning products
- bedding (pillows, quilt cover, bed sheets and duvets)
- hangers for clothes
- cushions and blankets

\*If you need help with this, please contact us below.

➔ For more information about the project, visit our website [www.broadlandgroup.org/sorrel-campion-house-replacement-of-hot-and-cold-water-pipes/](http://www.broadlandgroup.org/sorrel-campion-house-replacement-of-hot-and-cold-water-pipes/), using the **code 1963**. If you have any queries about how the work affects you, please call Catalina Ruane on 01603 750224 or email [catalina.ruane@broadlandgroup.org](mailto:catalina.ruane@broadlandgroup.org) Thank you for your patience.

# Flat type D layout

(PJ Plumbing: please mark on the plan below the positions agreed with the tenant for any new radiators that need to be installed)



FLAT TYPE D - CAMPION HOUSE No. 26, 27 & 28

# Finish of new heating pipes

**EITHER: Decorate**  
 you can decorate the exposed pipes in  
 a colour of your own choice



**OR: Boxed**  
 we can box the pipework for you in  
 uPVC white casing



## TENANT: PLEASE SIGN

I agree with the position of the radiators as indicated on the above plan, as discussed today

*(please select one:)* I would like to decorate the new pipes myself  Please box in for me

Signature: .....

Name: .....

Flat address: .....

Date: .....