



HM Prison &  
Probation Service



Bedfordshire  
Cambridgeshire  
Norfolk Group

*BUILDING CONNECTING NURTURING*

# The **Duty to Refer** & Criminal Justice

Amy Harrold – Strategic Housing Specialist



## SHS network and NSHP



### **Priority 1**

Reduce Homelessness by focussing on homeless prevention services.

**Work with partners to reduce homelessness amongst ex-offenders when released from prison.**

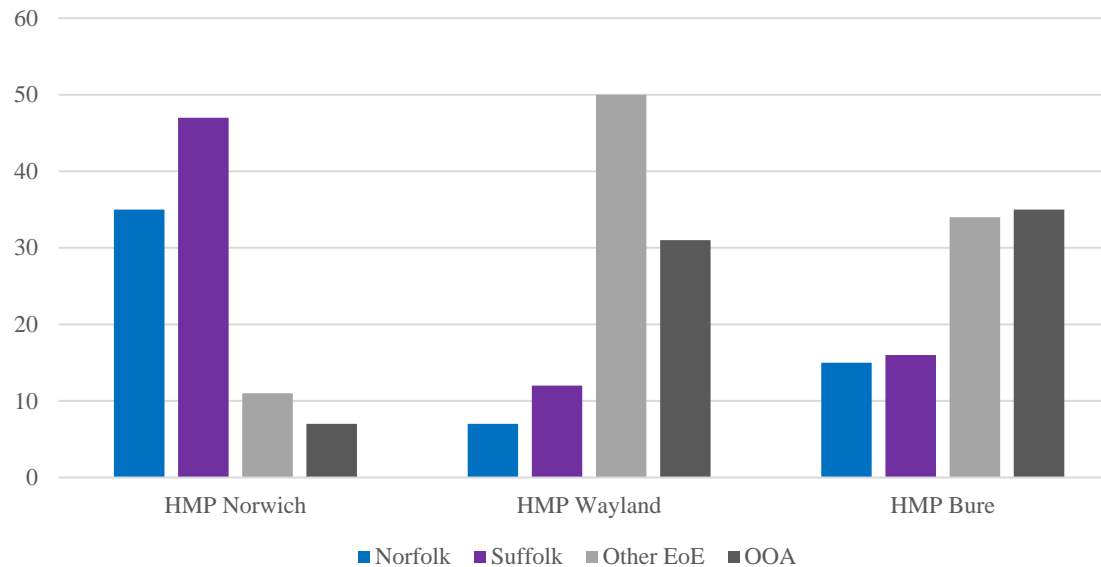


# SHS role

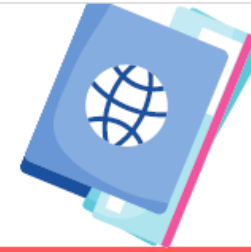


Strengthening relationships with Local Housing Authorities to embed an effective Duty to Refer process between us

Prison release % by area - Apr-Sep 23



# RESETTLEMENT PASSPORTS



## WHAT IS IT?

• THE RESETTLEMENT PASSPORT WILL SUPPORT YOUR TRANSITION FROM CUSTODY AND BACK INTO THE COMMUNITY THROUGH CONTAINING ALL OF THE INFORMATION PROVIDED TO YOU DURING THIS TIME IN ONE PLACE, MAKING THIS EASILY ACCESSIBLE.



## WORK BOOKLETS

You will be given a workbook to work through during your keywork sessions. This will help you plan and think about your release, including reflecting on your resettlement goals and how you will work towards these

This file may also be used to store important documents or information which will help you re-integrate back into the community, such as any certificates. This workbook is for you, and anything you add to this file will not be sent to your community probation officer.

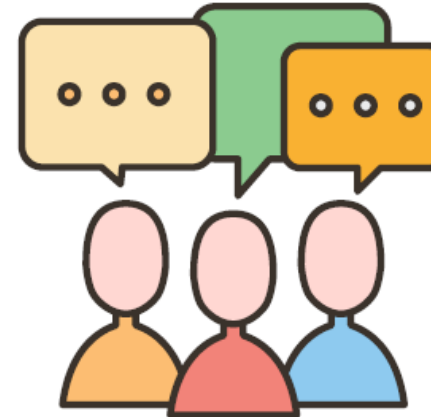
## QUALIFICATIONS

## ID & BANK ACCOUNT

## WHAT WILL IT INCLUDE ?

## USEFUL CONTACTS & APPOINTMENTS

## CV & DISCLOSURE LETTER

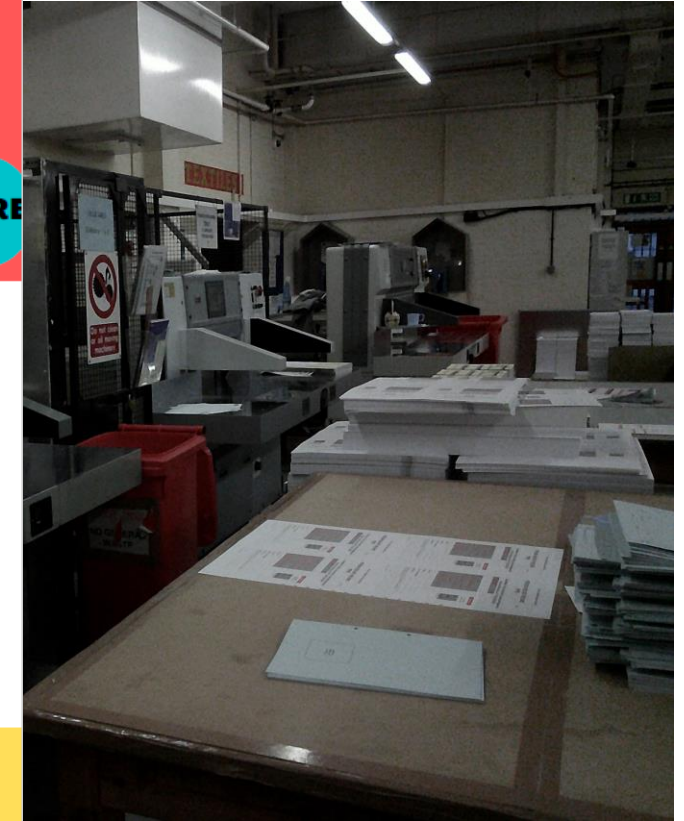
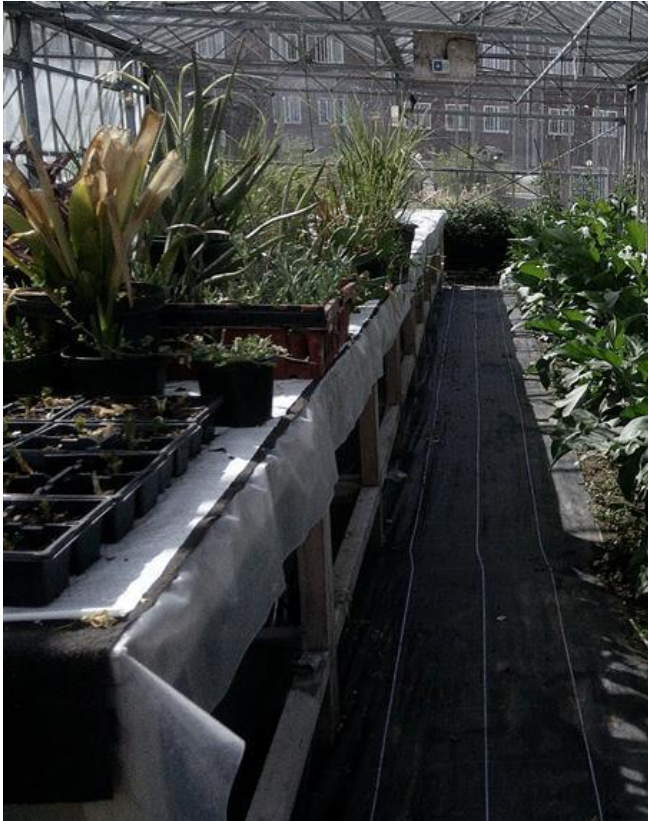


## WHEN WILL YOU RECEIVE YOUR PASSPORT?

- You can request a copy of your personal information at any time.



- Upon your release, the passport will be printed and given to you as a hard copy, or emailed to you, or a trusted person (family member, friend), depending on your preference.
- A copy will also be sent to your community probation officer, supporting your resettlement.



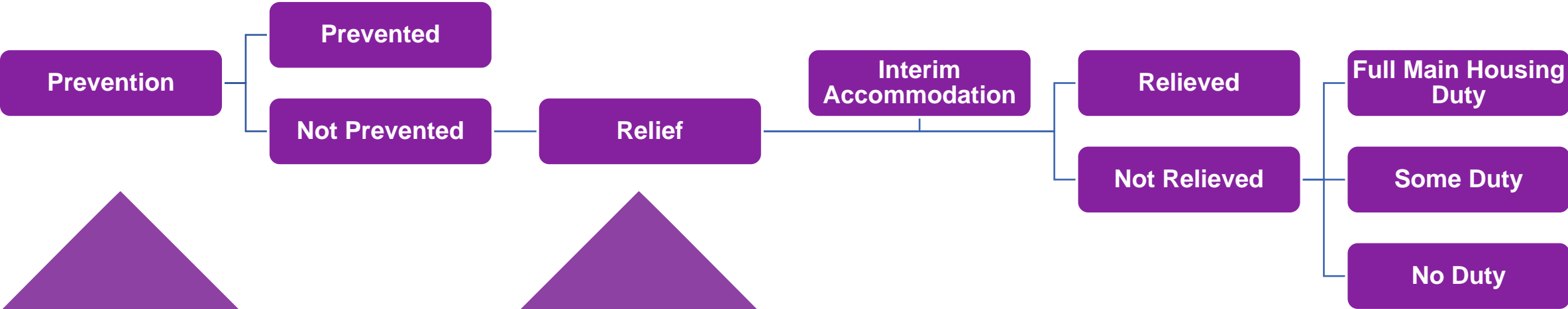
**Behind all the processes...**

...is a real person.





# The Homelessness Application Stages





# CAS3 Accommodation

- Must be available on the Prison Leaver's day of release.
- Must be available for up to 84 nights, although the assumption is that the individual will move on earlier.
- Accommodation from 1-bedroom self-contained units, to a maximum of 4 bed spaces with shared facilities.
- All single gender accommodation, 10% must be dedicated for sole use by females.
- Accommodation available at a sub-regional level.
- Accommodation furnished to decent homes standard, with a welcome pack of basic food essentials and toiletries.
- The supplier must meet the prison leaver at the property on the day of release for property induction.



# Recurring issues

## Local Connection

“Homelessness does not fit within neat geographical boundaries and the complexity of the challenge means that a system wide response is the only response.” (Foreword – Norfolk Homelessness Prevention Strategy, 2022-2025)

## Priority Need and offer of interim accommodation

**8.3** [Section 188\(1\) of the 1996 Act](#) requires housing authorities to secure that accommodation is available for an applicant if they have reason to believe that the applicant **may** be homeless, eligible for assistance and have a priority need. (i) a person who is vulnerable as a result of:

1. (i) having served a custodial sentence;
2. (ii) having been committed for contempt of court or any other kindred offence; or,
3. (iii) having been remanded in custody;(see [paragraphs 8.35–8.36](#));

## Intentionality

Prevention and Relief duties joined the homelessness application train in 2018 and all applicants can be owed a Prevention and/or Relief duty regardless of a future potential Intentional Homelessness decision.

**Thank you!**

Amy Harrold

Strategic Housing Specialist

*Covering HMP/YOI Norwich, HMP Wayland, HMP Bure*

✉ amy.harrold@justice.gov.uk ☎ 01603 708756